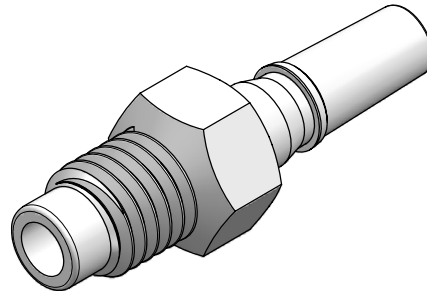
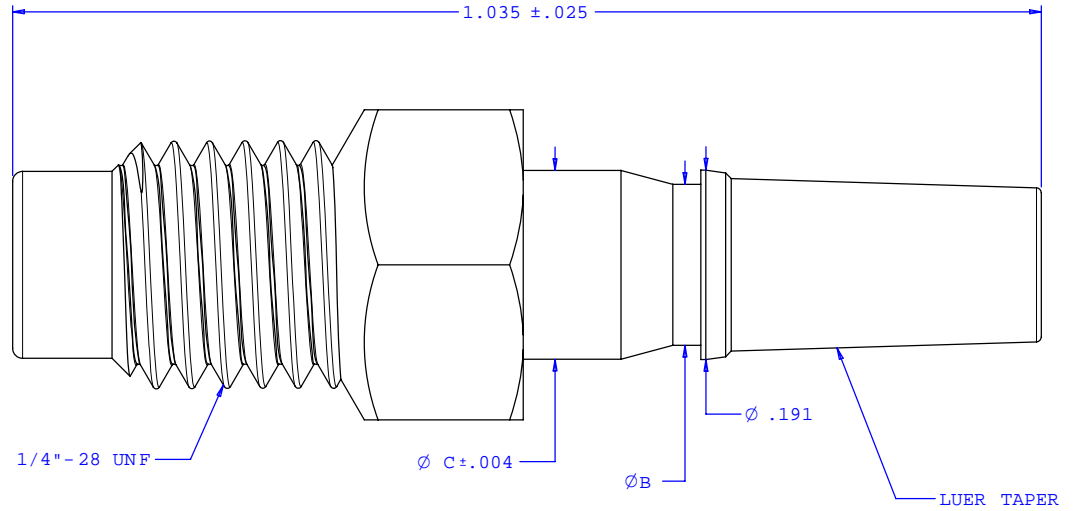
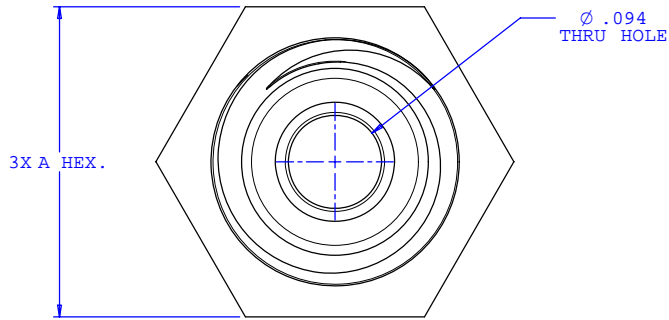


NOTE: FOR MORE DETAILS SEE YOUR V.P.CUSTOMER SERVICE REP.

REVISIONS			
REV.	DESCRIPTION	DATE	APPROVED
A	INITIAL RELEASE	06-12-01	
B	CO 018 Drafting Update	01-17-06	Rick C.



Dimension	Material Specific Tolerances							
	Acetal	Nylon	PP	ABS	PC	PVC	Polysulfone	J1A
A	.312	.312	.312	.312	.312	.312	.312	.307
B	.162	.162	.162	.162	.162	.162	.162	.156
C	.190	.190	.190	.190	.190	.190	.190	.188
D								
E								
F								

UNLESS OTHERWISE SPECIFIED DIMENSIONS ARE IN INCHES TOLERANCES ARE:		<b>VALUE PLASTICS, INC.</b>	
FRACTIONS ±	DECIMALS .XX ±.01 .XXX ±.005 .XXXX ±.001	ANGULAR ±1°	PART NUMBER: <b>BSMLRL</b>
DO NOT SCALE DRAWING		DESCRIPTION: MALE LUER THREAD STYLE WITH 5/16" HEX TO 1/4-28 UNF BOTTOM SEALING THREAD	
DRAWN BY: <b>Frank Lombardi</b>	DATE: <b>06-09-05</b>	SIZE: <b>B</b>	SCALE: <b>NTS</b>
ENGINEER/ MANAGER: <b>Rick Cairns</b>		DRAWING NUMBER: <b>1006882</b>	REV. <b>B</b>
© 2005 VALUE PLASTICS, INC.		SHEET: 1 OF 1	

**FOR REFERENCE ONLY**