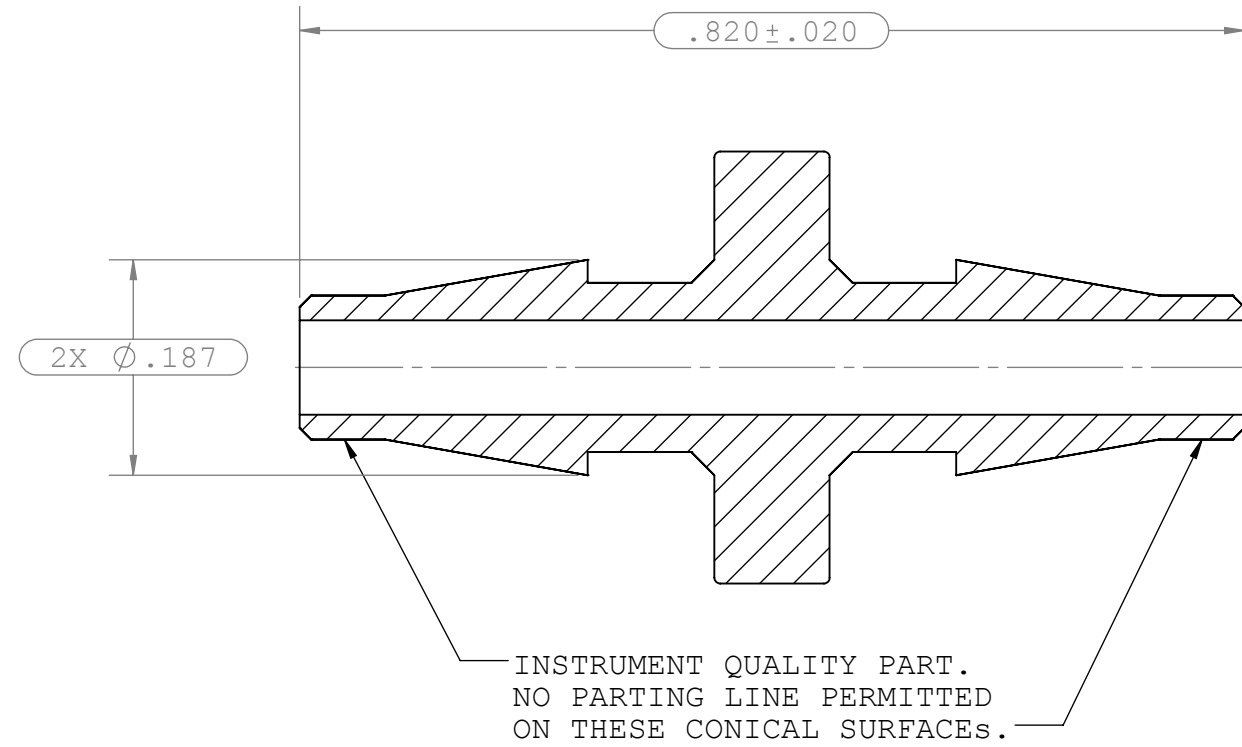
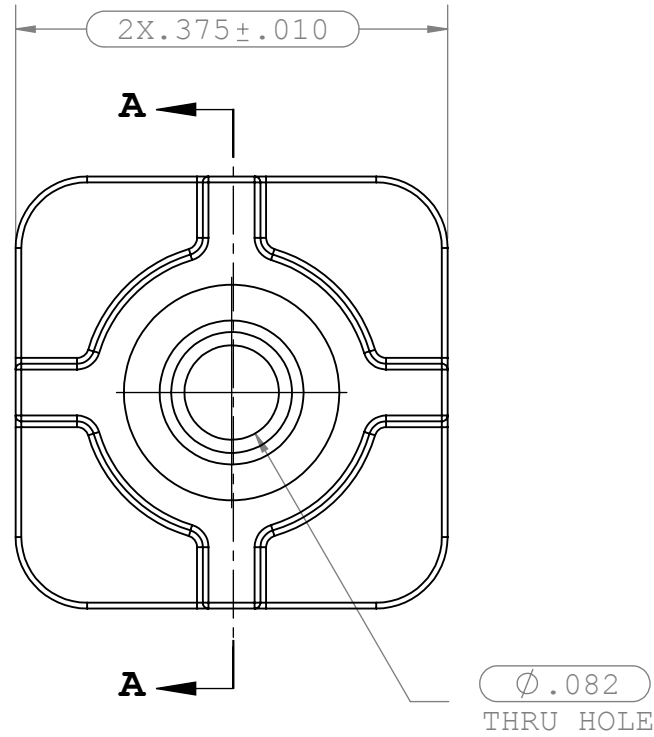
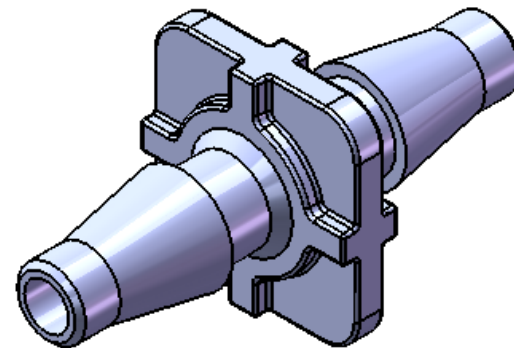


NOTES: FOR ADDITIONAL DETAILS, PLEASE CONTACT VP CUSTOMER SERVICE
 DIMENSIONS MARKED ϕ ARE CONTROL DIMENSIONS

REVISIONS			
REV.	DESCRIPTION	DATE	APPROVED
A	INITIAL RELEASE	7-25-97	
B	CO 012 Core Center Rib	05-04-05	R. Cairns
C	ECO 203	6-28-11	R. Cairns



SECTION A-A



UNLESS OTHERWISE SPECIFIED DIMENSIONS ARE IN INCHES TOLERANCES ARE:		VALUE PLASTICS, INC			
FRACTIONS DECIMAL ANGULAR ± .XX ±.01 ± 1° .XXX ±.005 .XXXX ±.001		PART NUMBER: CC			
DO NOT SCALE DRAWING		DESCRIPTION: Straight Through Tube Fitting with Classic Series Barbs, 1/8" (3.2 mm) ID Tubing			
DRAWN BY: shannond	DATE: 6/27/2011	SIZE: B	SCALE: NTS	VER: 	DWG. NO. 1005629
MANAGER: R. Cairns		© 2011 VALUE PLASTICS, INC			REV C
				SHEET: 1 OF 1	

FOR REFERENCE ONLY