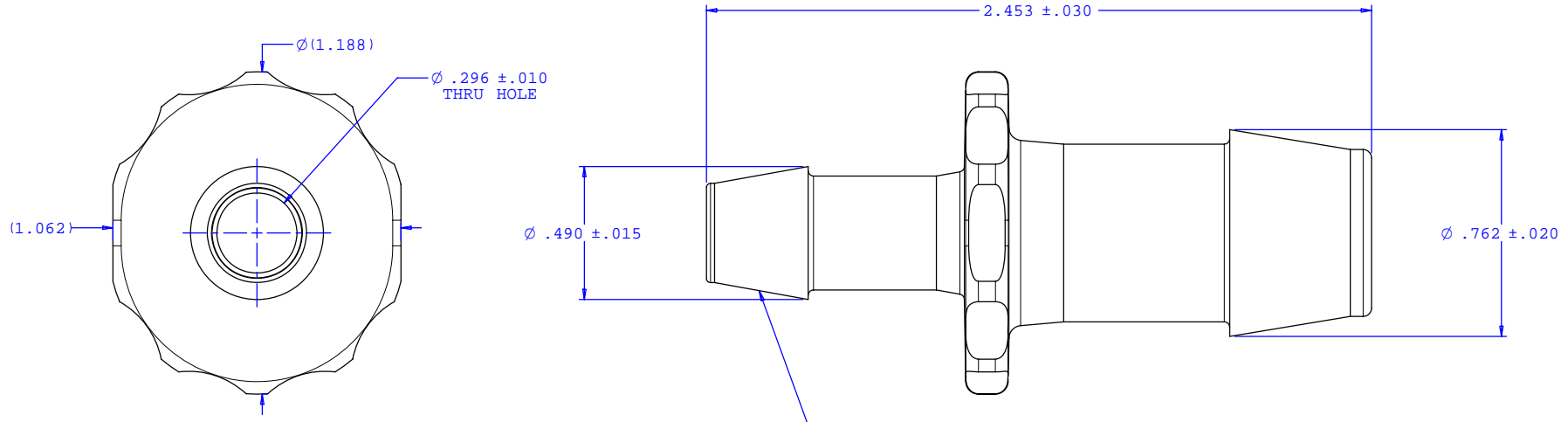
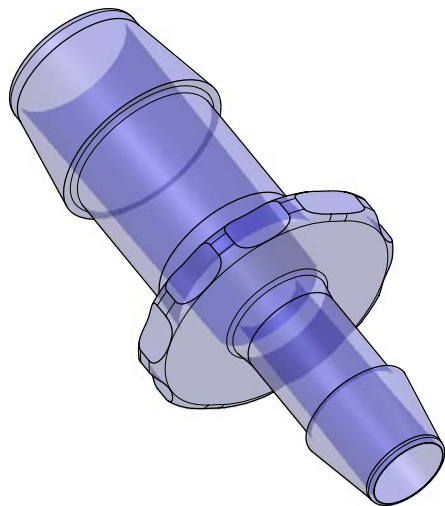


NOTE: FOR MORE DETAILS SEE YOUR V.P. CUSTOMER SERVICE REP.

REVISIONS			
REV.	DESCRIPTION	DATE	APPROVED
A	INITIAL RELEASE	04-21-05	RICK C.



2X INSTRUMENT QUALITY PART. NO PARTING LINE PERMITTED ON THIS CONICAL SURFACE



UNLESS OTHERWISE SPECIFIED DIMENSIONS ARE IN INCHES TOLERANCES ARE:		VALUE PLASTICS, INC.	
FRACTIONS	DECIMALS	ANGULAR	PART NUMBER: N690/670
±	.XX ±.01 .XXX ±.005 .XXXX ±.001	±1°	DESCRIPTION: Straight Thru Reduction Connector with 600 Series Barbs, 5/8" (16 mm) and 3/8" (9.5 mm) ID Tubing
DO NOT SCALE DRAWING			REV. A
DRAWN BY: Frank Lombardi	DATE: 4-19-05	SIZE: B	SCALE: NTS
Engineer/Manager: Rick Cairns		DRAWING NUMBER: 1006345	
© 2005 VALUE PLASTICS, INC.		SHEET: 1 OF 1	

FOR REFERENCE ONLY